



u-pvc fittingsler ve borular

u-pvc fittings and pipes



NOZBART®



TÜM

PLASTİK VE MAKİNA KALIP SANAYİ VE TİCARET LİMİTED ŞİRKETİ

**TÜV
CERT**
DIN EN ISO 9001:2015
Zertifikat 15 100 52993

TSE

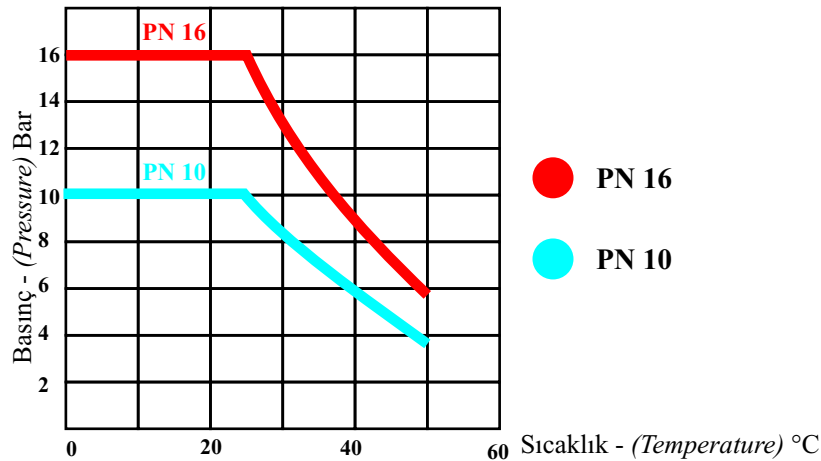
EAC

CE

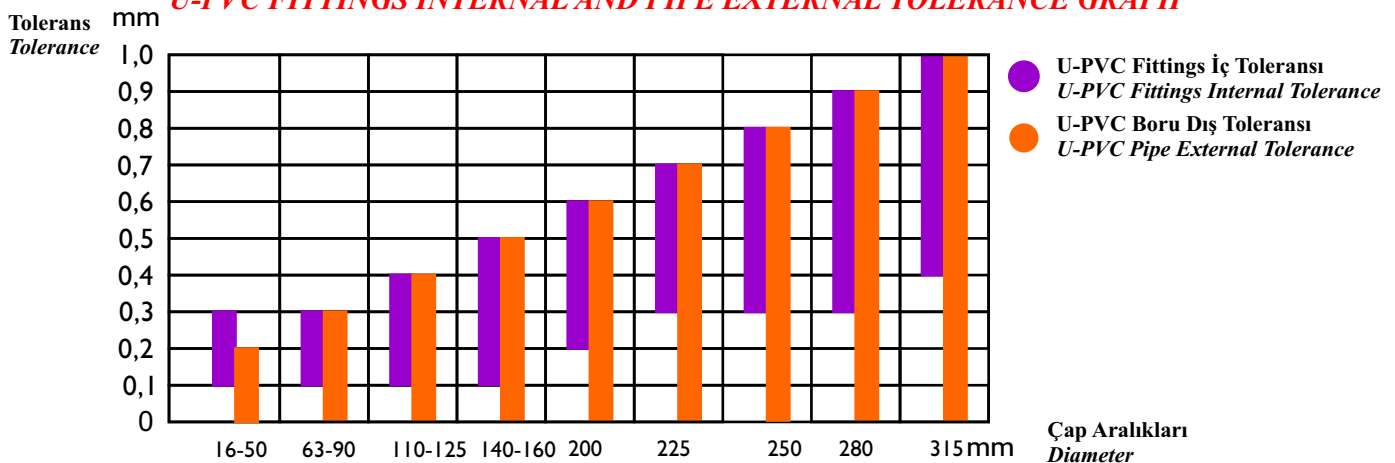
UHE
UHE Kurucu Üyesidir.

- * Farklı uygulamalar için yüksek kalite U-P.V.C'den mamul.
Made of high quality U-PVC material for diverse applications.
- * Tamamıyla termoplastik malzemeden mamul, korozyonsuz sağlıklı çalışma.
Made of thermoplastic material, working without corrosion
- * Ortam koşullarına ve mekanik etkilere üstün dayanım.
Excellent mechanical and environmental strength.
- * Yüzme havuzu, endüstriyel uygulamalar, arıtma sistemleri ve içme suyu sistemlerine uygun.
Ideally suited for swimming pool, industrial, water treatment or water distribution applications.
- * Metrik seriler ISO 727, EN 1452, DIN 8063 ve dişli seriler ISO R7, ISO 228/1, BS 21, DIN 2999 standartlarına uygun.
Metric series with ISO 727, EN 1452, DIN 8063 and threaded series with ISO R7, ISO 228/1, BS 21, DIN 2999.
- * Asitler dahil olmak üzere birçok kimyasal ile çalışma imkanı.
U-PVC fittings are resistant to a wide range of chemicals including acids.
- * Tamamıyla orjinal hammaddeden üretilmiş olup, geri dönüşüm (hurda) malzeme kullanılmamaktadır.
Our products is made completely from the original raw materials, recycling (waste) material does not contain.

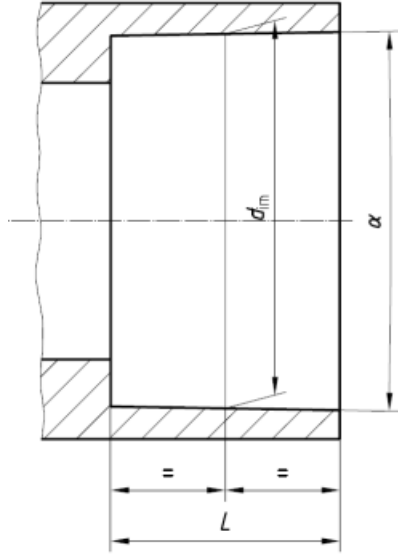
U-P.V.C FITTINGSLER İÇİN AKIŞKAN SICAKLIĞINA BAĞLI KULLANIM BASINCI DİYAGRAMI
TEMPERATURE - PRESSURE DIAGRAM FOR U-PVC FITTINGS



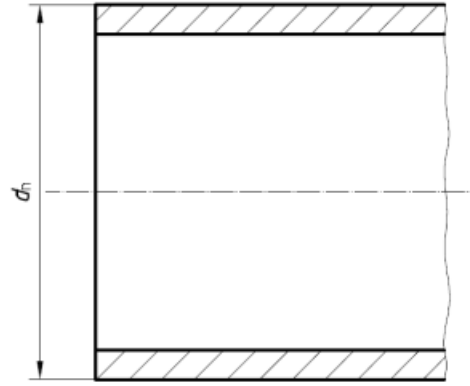
U-PVC FITTINGS İÇ VE BORU DIŞ TOLERANS GRAFIĞİ
U-PVC FITTINGS INTERNAL AND PIPE EXTERNAL TOLERANCE GRAPH



DIN 8063 & ISO 727-1



a) Soket / Socket

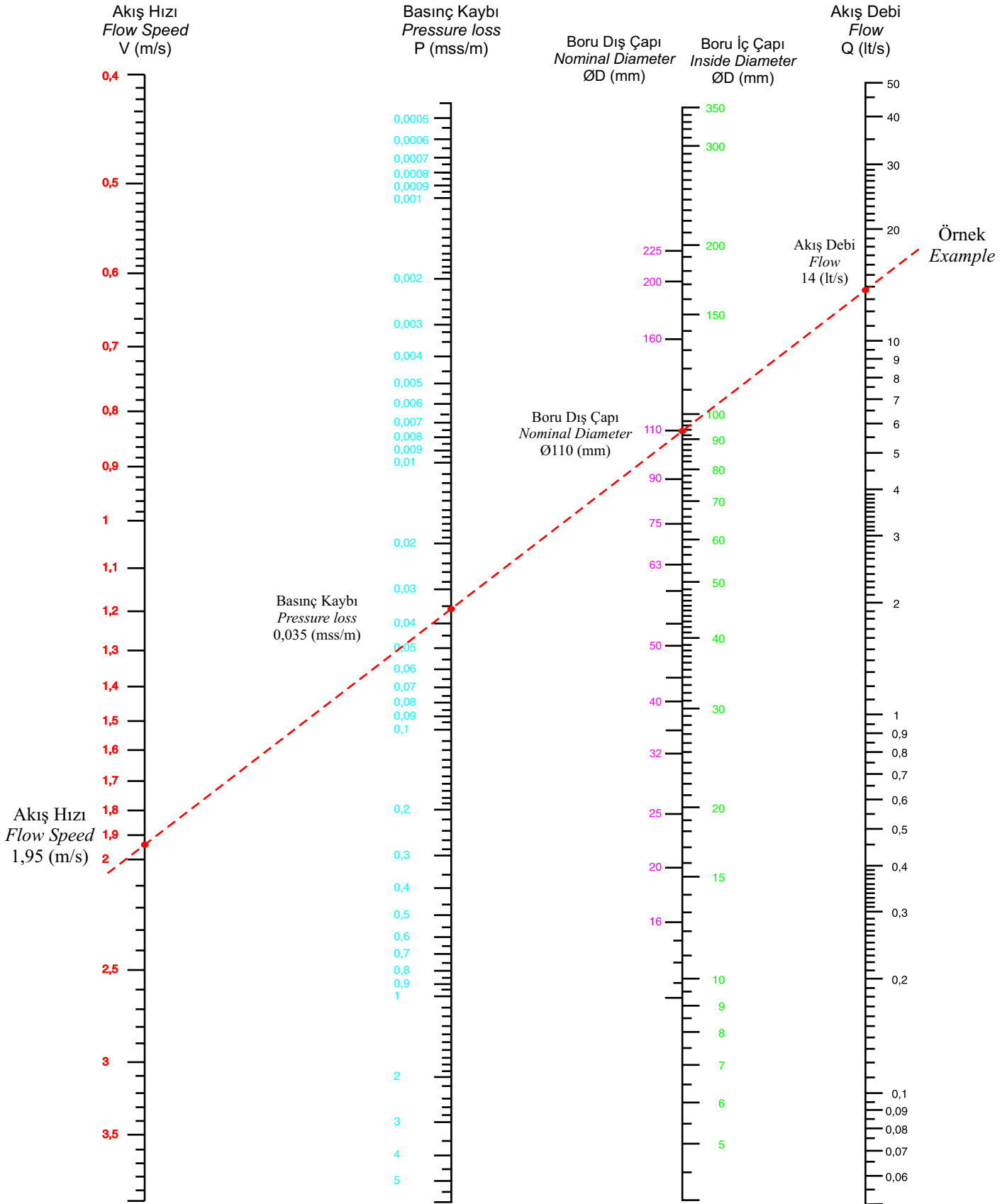


b) Boru / Pipe

U-PVC Fittings Ölçü Tablosu
U-PVC Fittings Dimension Table

Nominal dış çap Nominal outside diameter d_n	Minimum soket uzunluğu Minimum socket length L	Soket orta noktada iç çapı ortalaması Mean inside diameter at mid-point of socket depth d_m		Yuvarlaklıktan Sapma (Ovalik) Out of roundness max.
		min.	max.	
10	12	10,1	10,3	0,25
12	12	12,1	12,3	0,25
16	14	16,1	16,3	0,25
20	16	20,1	20,3	0,25
25	18,5	25,1	25,3	0,25
32	22	32,1	32,3	0,25
40	26	40,1	40,3	0,25
50	31	50,1	50,3	0,3
63	37,5	63,1	63,3	0,4
75	43,5	75,1	75,3	0,5
90	51	90,1	90,3	0,6
110	61	110,1	110,4	0,7
125	68,5	125,1	125,4	0,8
140	76	140,2	140,5	0,9
160	86	160,2	160,5	1
180	96	180,2	180,6	1,1
200	106	200,2	200,6	1,2
225	118,5	225,3	225,7	1,4
250	131	250,3	250,8	1,5
280	146	280,3	280,9	1,7
315	163,5	315,4	316	1,9
355	183,5	355,5	356,2	2,2
400	206	400,5	401,5	2,4

20 °C U-PVC BORULARDA BASINÇ KAYBI NOMOGRAM
PRESSURE LOSSES ON U-PVC PIPES NOMOGRAM AT 20°C



Bilinen iki değer yardımıyla doğru çizilerek istenen diğer değerlere ulaşılabilir.
Joining the two values on lines and extending the line henceforth will give the desired values.

YÜZME HAVUZU İÇİN BORU SEÇİMİ (PN 10) SWIMMING POOL PIPE SELECTION GUIDIE (PN 10)

Boru Dış Çapı Nominal Diameter	Boru İç Çapı Inside Diameter	Debi (Flow) m ³ /saat (m ³ /hour)			
		Emiş Hattı (Suction Line) V= 1,5 m/sn	Basma Hattı (Discharge Line) V= 2,5 m/sn	% 1,5 Eğimli Taşma (% 1,5 Sloping Line) V= 0,75 m/sn	Kollektör (Collector) V= 0,5 m/sn
mm	mm	TON / SAAT	TON / SAAT	TON / SAAT	TON / SAAT
40	36	5.5	9.2	2,7	1,8
50	45	8.5	14,3	4,3	2,8
63	57	14	23	6,9	4,6
75	67	19	31,7	9,5	6,3
90	81	27.8	46,4	13,9	9,3
110	100	42.4	70,7	21,2	14
125	113	54	90,3	27	18
140	126	67.3	112	33,7	22,4
160	145	89.2	149	44,6	30
200	181	139	231,6	69,5	46,3
225	203	175	291,3	87,4	58,3
250	226	216.6	361	108,3	72,2
280	253	271.5	452,5	135,7	90,5
315	285	344.5	574	172,2	115
355	327	453,5	756	227	151
400	362	556	926,3	278	185,3

Debi (Flow) m³/saat (m³/hour) = $\rho \times D^2 / 4 \times V \times 3600 = 2827,43 \times D^2 \times V$ (m³/saat) (m³/hour)

D = Boru İç Çapı (Nominal Diameter) m

V = Akış Hızı (Velocity) m/sn

Akış Hızı Velocity m/sn	Emiş Hattı (Suction Line)	V= 1,5 m/sn
	Basma Hattı (Discharge Line)	V= 2,5 m/sn
	% 1,5 Eğimli taşma ana arteli (% 1,5 Sloping Line)	V= 0,75 m/sn
	Kollektör (Collector)	V= 0,5 m/sn

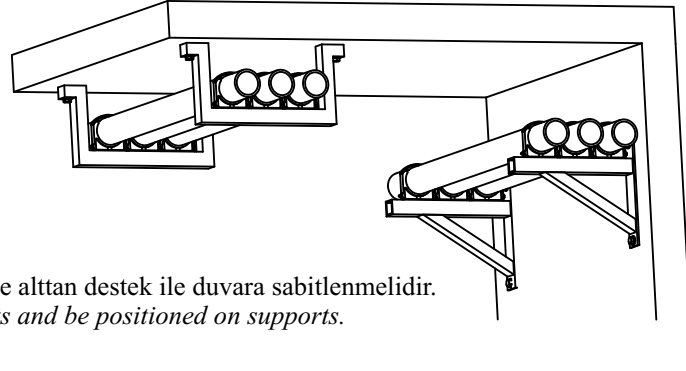
FITTINGS AKIŞ KAYBINA EŞDEĞER BORU UZUNLUĞU HESABI CALCULATION OF FITTINGS FLOW LOSS EQUIVALENT PIPE LENGTH

L (Eş Değer Boru Uzunluğu (m)) = K (Kayıp Katsayısı) x DN (Nominal Çap (mm))

L (Equivalent Pipe Length (in meters)) = K (Loss Coefficient) x DN (Fittings Internal Diameter (mm))

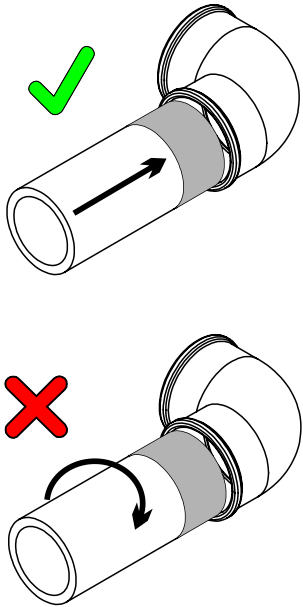
FITTINGS (FITTINGS)	K
90° Dirsek (Elbow)	0,030
45° Dirsek (Elbow)	0,014
Te (Düz Tarafı) (Straight Through)	0,012
Te (Dönüş Tarafı) (Side Branch)	0,060
Redüksiyon (Reducing Bush) (Her kademe için) (Per Size)	0,150

KELEPÇE VE DESTEK KULLANIMI
PIPE CLIPS AND BRACKET USE



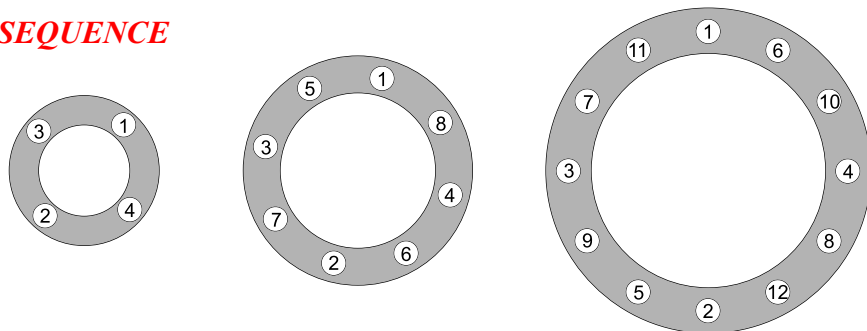
U-PVC borularda kapaklı kelepçe kullanılmalı ve alttan destek ile duvara sabitlenmelidir.
U-PVC pipes must be fixed using slip on brackets and be positioned on supports.

KELEPÇE VE YAPIŞTIRICI MİKTARI
PIPE CLIPS AND CEMENT



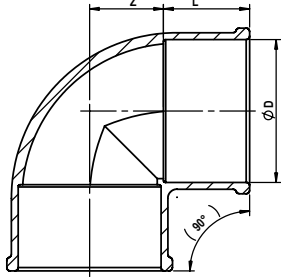
D		Kelepçe Aralıkları Bracket Spacing (m)			Bir litre yapıştırıcı ile yapıştırma sayısı Recommended joints per litre of cement
		20 °C	30 °C	40 °C	
MM	INC				
20	1/2"	0,90	0,80	0,60	375
25	3/4"	1,00	0,90	0,70	300
32	1"	1,10	0,95	0,75	250
40	1 1/4"	1,20	1,10	0,90	200
50	1 1/2"	1,30	1,20	1,00	110
63	2"	1,40	1,30	1,10	80
75	2 1/2"	1,50	1,40	1,20	55
90	3"	1,60	1,50	1,30	40
110	4"	1,90	1,80	1,60	25
125	4 1/2"	2,10	2,00	1,85	22
140	5"	2,20	2,10	1,90	18
160	6"	2,30	2,20	2,00	11
200	7"	2,60	2,45	2,30	7
225	8"	2,60	2,45	2,30	5
250	9"	2,80	2,70	2,55	4
280	10"	3,20	3,00	2,85	3
315	12"	3,60	3,40	3,20	2

FLANŞ SIKMA SIRASI
FLANGE TIGHTENING SEQUENCE



90° DERECE DİRSEK 90° ELBOW

- ✓ Metrik yapıştırma soketli
Metric female solvent socket

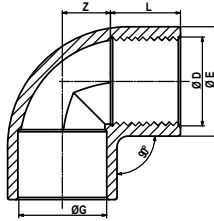


D		KOD CODE	PN	L	Z	Ambalaj Package
MM	INC					
20	1/2"	F90-020	16	16	11	650
25	3/4"	F90-025	16	19	13,5	300
32	1"	F90-032	16	22	17	170
40	1 1/4"	F90-040	16	26	21	80
50	1 1/2"	F90-050	16	31	26	150
63	2"	F90-063	16	38	32,5	70
75	2 1/2"	F90-075	16	44	38,5	40
90	3"	F90-090	16	51	46	30
110	4"	F90-110	16	61	56	30
125	4 1/2"	F90-125	16	69	63	20
140	5"	F90-140	16	76	71	15
160	6"	F90-160	16	86	81	12
200	7"	F90-200	10	106	100	8
225	8"	F90-225	10	119	113	6
250	9"	F90-250	10	131	188	2
280	10"	F90-280	10	147	210	2
315	12"	F90-315	10	164	236	1
355	14"	F90-355	10	184	-	1
400	16"	F90-400	10	206	-	1

Tüm ürünlerimiz enjeksiyondur.
All our products are manufactured by injection.

90° DERECE TEK TARAFLI DİŞLİ DİRSEK 90° ELBOW (ONE SIDE THREADED)

- ✓ Metrik yapıştırma soketli
Metric female solvent socket
- ✓ BSP İç Dişli
BSP female thread socket

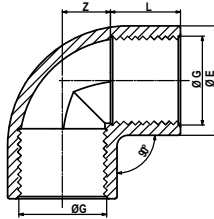


D	G	KOD	PN	L	Z	E
MM	INC	CODE				
20	1/2"	F90-021	16	16	11	25
25	3/4"	F90-026	16	19	13,5	32
32	1"	F90-033	16	22	17	40
40	1 1/4"	F90-041	16	26	21	50

Tüm ürünlerimiz enjeksiyondur.
All our products are manufactured by injection.

90° DERECE İKİ TARAFLI DİŞLİ DİRSEK 90° ELBOW (TWO SIDE THREADED)

- ✓ BSP İç Dişli
BSP female thread socket



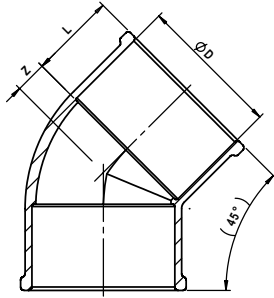
D	G	KOD	PN	L	Z	E
MM	INC	CODE				
20	1/2"	F90-022	16	16	11	25
25	3/4"	F90-027	16	19	13,5	32
32	1"	F90-034	16	22	17	40
40	1 1/4"	F90-042	16	26	21	50

Tüm ürünlerimiz enjeksiyondur.
All our products are manufactured by injection.

45° DERECE DİRSEK

45° ELBOW

- ✓ Metrik yapıştırma soketli
Metric female solvent socket



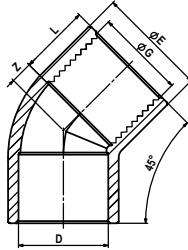
D	KOD		PN	L	Z	Ambalaj Package
	MM	INC				
20	1/2"	F45-020	16	16	5	750
25	3/4"	F45-025	16	19	6	400
32	1"	F45-032	16	22	7,5	200
40	1 1/4"	F45-040	16	26	9,5	100
50	1 1/2"	F45-050	16	31	11,5	180
63	2"	F45-063	16	38	14	85
75	2 1/2"	F45-075	16	44	16,5	50
90	3"	F45-090	16	51	19,5	30
110	4"	F45-110	16	61	23,5	38
125	4 1/2"	F45-125	16	69	27	25
140	5"	F45-140	16	76	30	18
160	6"	F45-160	16	86	34	12
200	7"	F45-200	10	106	42,5	10
225	8"	F45-225	10	119	48	8
250	9"	F45-250	10	131	58	2
280	10"	F45-280	10	147	62	2
315	12"	F45-315	10	164	66	1
355	14"	F45-355	10	184	-	1
400	16"	F45-400	10	206	-	1

Tüm ürünlerimiz enjeksiyondur.
All our products are manufactured by injection.

45° DERECE TEK TARAFLI DİŞLİ DİRSEK

45° ELBOW (ONE SIDE THREADED)

- ✓ Metrik yapıştırma soketli
Metric female solvent socket
- ✓ BSP İç Dişli
BSP female thread socket



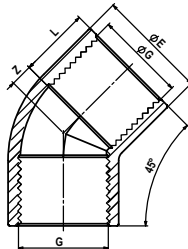
D	G	KOD	PN	L	Z	E
MM	INC	CODE				
20	1/2"	F45-021	16	16	5	25
25	3/4"	F45-026	16	19	6	32
32	1"	F45-033	16	22	7,5	40
40	1 1/4"	F45-041	16	26	9,5	50

Tüm ürünlerimiz enjeksiyondur.
All our products are manufactured by injection.

45° DERECE İKİ TARAFLI DİŞLİ DİRSEK

45° ELBOW (TWO SIDE THREADED)

- ✓ BSP İç Dişli
BSP female thread socket



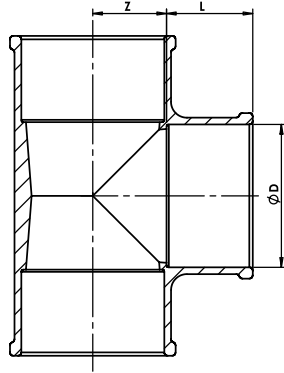
D	G	KOD	PN	L	Z	E
MM	INC	CODE				
20	1/2"	F45-022	16	16	5	25
25	3/4"	F45-027	16	19	6	32
32	1"	F45-034	16	22	7,5	40
40	1 1/4"	F45-042	16	26	9,5	50

Tüm ürünlerimiz enjeksiyondur.
All our products are manufactured by injection.

TE

TEE

- ✓ Metrik yapıştırma soketli
Metric female solvent socket



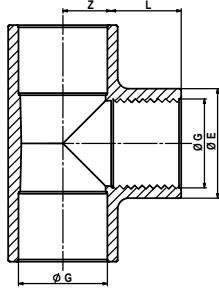
MM	D		KOD CODE	PN	L	Z	Ambalaj Package
	INC						
20	1/2"		FTE-020	16	16	11	400
25	3/4"		FTE-025	16	19	13,5	200
32	1"		FTE-032	16	22	17	100
40	1 1/4"		FTE-040	16	26	21	50
50	1 1/2"		FTE-050	16	31	26	90
63	2"		FTE-063	16	38	32,5	50
75	2 1/2"		FTE-075	16	44	38,5	30
90	3"		FTE-090	16	51	46	20
110	4"		FTE-110	16	61	56	25
125	4 1/2"		FTE-125	16	69	63	16
140	5"		FTE-140	16	76	71	10
160	6"		FTE-160	16	86	81	8
200	7"		FTE-200	10	106	100	5
225	8"		FTE-225	10	119	113	4
250	9"		FTE-250	10	131	128	2
280	10"		FTE-280	10	147	144	2
315	12"		FTE-315	10	164	162	1
355	14"		FTE-355	10	184	-	1
400	16"		FTE-400	10	206	-	1

Tüm ürünlerimiz enjeksiyondur.
All our products are manufactured by injection.

TEK TARAFI DİŞLİ TE

TEE (ONE SIDE THREADED)

- ✓ Metrik yapıştırma soketli
Metric female solvent socket
- ✓ BSP İç Dişli
BSP female thread socket

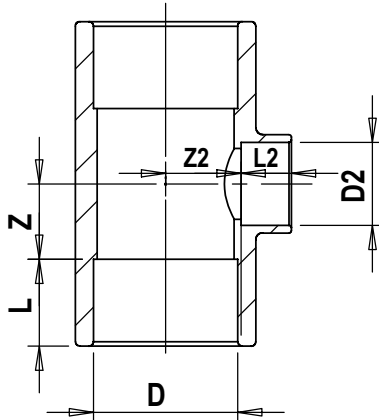


D	G	KOD	PN	L	Z	E
MM	INC	CODE				
20	1/2"	FTE-021	16	16	11	25
25	3/4"	FTE-026	16	19	13,5	32
32	1"	FTE-033	16	22	17	40
40	1 1/4"	FTE-041	16	26	21	50

Tüm ürünlerimiz enjeksiyondur.
All our products are manufactured by injection.

İNEGAL TE
REDUCING TEE

- ✓ Metrik yapıştırma soketli
Metric female solvent socket



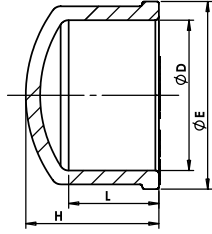
	D		D2	KOD CODE	PN	L	L2	Z	Z2
	MM	INC							
+	50	1 ½"	32	T50-32	16	31	22	28	28
+	63	2"	32	T63-32	16	38	22	35	26
+	63	2"	50	T63-50	16	38	31	35	34
+	75	2 ½"	50	T75-50	16	44	38	40	41
+	75	2 ½"	63	T75-63	16	44	38	40	41
+	90	3"	50	T90-50	16	51	38	46	55
+	90	3"	63	T90-63	16	51	38	46	55
+	90	3"	75	T90-75	16	51	38	46	55
+	110	4"	63	T110-63	16	61	38	56	65
+	110	4"	75	T110-75	16	61	44	56	65
+	110	4"	90	T110-90	16	61	51	56	65
+	125	4 ½"	63	T125-63	16	69	38	64	75
+	125	4 ½"	75	T125-75	16	69	44	64	83
+	125	4 ½"	90	T125-90	16	69	51	64	75
+	125	4 ½"	110	T125-110	16	69	61	64	75
+	140	5"	63	T140-63	16	76	66	72	97
+	140	5"	75	T140-75	16	76	44	72	91
+	140	5"	90	T140-90	16	76	51	72	75
+	140	5"	110	T140-110	16	76	61	72	74
+	160	6"	63	T160-63	16	86	38	81	105
+	160	6"	75	T160-75	16	86	44	81	99
+	160	6"	90	T160-90	16	86	51	81	93
+	160	6"	110	T160-110	16	86	61	81	81
+	160	6"	125	T160-125	16	86	69	81	105
+	200	7"	75	T200-75	10	106	44	107	147
+	200	7"	90	T200-90	10	106	51	107	141
+	200	7"	110	T200-110	10	106	61	107	131
+	200	7"	125	T200-125	10	106	69	107	115
+	200	7"	140	T200-140	10	106	76	107	110
+	200	7"	160	T200-160	10	106	86	107	106
+	225	8"	110	T225-110	10	108	60	120	119
+	225	8"	125	T225-125	10	108	67	120	162
+	225	8"	140	T225-140	10	119	76	120	157
+	225	8"	160	T225-160	10	119	86	120	119
+	225	8"	200	T225-200	10	119	106	114	126
+	250	9"	140	T250-140	10	131	76	132	191
+	250	9"	160	T250-160	10	131	86	132	169
+	250	9"	200	T250-200	10	131	106	132	157
+	250	9"	225	T250-225	10	131	119	132	144
+	280	10"	140	T280-140	10	147	76	152	226
+	280	10"	160	T280-160	10	147	86	152	204
+	280	10"	200	T280-200	10	147	106	152	192
+	280	10"	225	T280-225	10	147	119	152	179
+	280	10"	250	T280-250	10	147	131	152	167
+	315	12"	280	T315-280	10	164	147	168	184
+	355	14"	280	T355-280	10	184	147	196	242
+	355	14"	315	T355-315	10	184	164	196	224
+	400	16"	280	T400-280	10	206	147	214	283
+	400	16"	315	T400-315	10	206	164	214	265
+	400	16"	355	T400-355	10	206	164	214	237

+ Redüksiyon yapıştırlmadan verilecektir.
Reduction will not be glued.

KÖR TAPA

CAP

- ✓ Metrik yapıştırma soketli
Metric female solvent socket



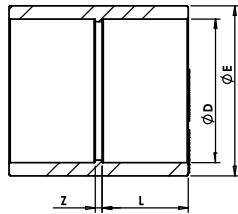
D		KOD CODE	PN	L	H	E	Ambalaj Package
MM	INC						
20	1/2"	FKT-020	16	16	24	27	1200
25	3/4"	FKT-025	16	19	29	32	800
32	1"	FKT-032	16	22	32	41	400
40	1 1/4"	FKT-040	16	26	40	54	250
50	1 1/2"	FKT-050	16	31	45	64	130
63	2"	FKT-063	16	38	56	79	60
75	2 1/2"	FKT-075	16	44	66	93	35
90	3"	FKT-090	16	51	76,5	110	20
110	4"	FKT-110	16	61	92	133	15
125	4 1/2"	FKT-125	16	69	115	144	32
140	5"	FKT-140	16	76	122	161,5	20
160	6"	FKT-160	16	86	140	185	12
200	7"	FKT-200	10	106	173	230	6
225	8"	FKT-225	10	119	196,5	260	10
250	9"	FKT-250	10	131	210	289	1
280	10"	FKT-280	10	147	240	320,5	1
315	12"	FKT-315	10	164	262	358	1
* 355	14"	FKT-355K	10	184	-	-	2
* 400	16"	FKT-400K	10	206	-	-	2

* Konfeksiyon / Hand made

MANŞON

MUFF

- ✓ Metrik yapıştırma soketli
Metric female solvent socket

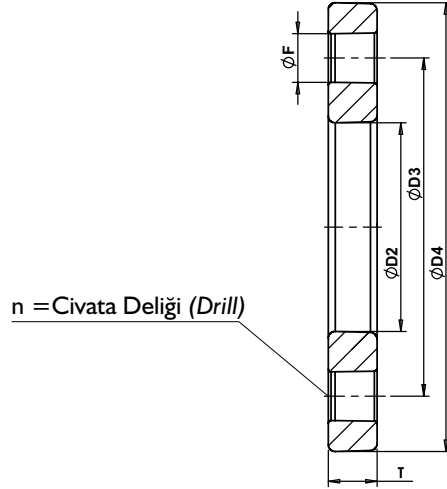


D		KOD CODE	PN	L	Z	E	Ambalaj Package
MM	INC						
20	1/2"	FMN-020	16	16	3	26	900
25	3/4"	FMN-025	16	19	3	31	450
32	1"	FMN-032	16	22	3	38	250
40	1 1/4"	FMN-040	16	26	3	48	140
50	1 1/2"	FMN-050	16	31	3	60	75
63	2"	FMN-063	16	38	3	75	35
75	2 1/2"	FMN-075	16	44	4	89	25
90	3"	FMN-090	16	51	5	106	15
110	4"	FMN-110	16	61	6	127	28
125	4 1/2"	FMN-125	16	69	6	140	36
140	5"	FMN-140	16	76	8	160	30
160	6"	FMN-160	16	86	8	187	20
200	7"	FMN-200	10	106	10	228	10
225	8"	FMN-225	10	119	10	252	6
250	9"	FMN-250	10	131	10	286	1
280	10"	FMN-280	10	147	10	320	1
315	12"	FMN-315	10	164	12	355	1
355	14"	FMN-355	10	184	-	-	1
400	16"	FMN-400	10	206	7	432	1

Tüm ürünlerimiz enjeksiyondur.

All our products are manufactured by injection.

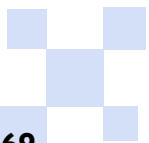
FLANŞ
FLANGE



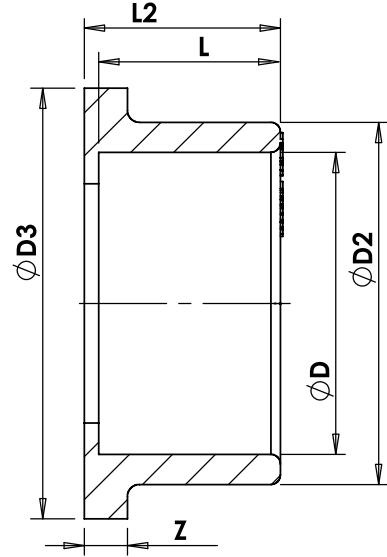
U-PVC

D		KOD CODE	PN	D2	D3	D4	T	F	n	Ambalaj Package
MM	INC									
20	1/2"	FFL-020	16	28	65	95	11	14	4	220
25	3/4"	FFL-025	16	34	75	105	12	14	4	170
32	1"	FFL-032	16	42	85	115	14	14	4	100
40	1 1/4"	FFL-040	16	51	100	140	15	18	4	75
50	1 1/2"	FFL-050	16	62	110	150	15,5	18	4	65
63	2"	FFL-063	16	78	125	165	18	18	4	45
75	2 1/2"	FFL-075	16	92	145	185	20	18	4	35
90	3"	FFL-090	16	110	160	200	22	18	8	55
110	4"	FFL-110	16	133	180	220	24	18	8	50
125	4 1/2"	FFL-125	16	150	210	250	26	18	8	30
140	5"	FFL-140	16	167	210	250	26	18	8	25
160	6"	FFL-160	16	190	240	285	28	22	8	20
200	7"	FFL-200	10	225	295	340	36	22	8	10
225	8"	FFL-225	10	250	295	340	36	22	8	10
250	9"	FFL-250	10	284	350	395	36	22	12	8
280	10"	FFL-280	10	307	350	395	36	22	12	1
315	12"	FFL-315	10	349	400	450	36	22	12	1
355	14"	FFL-355	10	388	460	505	38	22	16	1
400	16"	FFL-400	10	442	515	565	42	26	16	1

Tüm ürünlerimiz enjeksiyondur.
All our products are manufactured by injection.



KOLE COLE



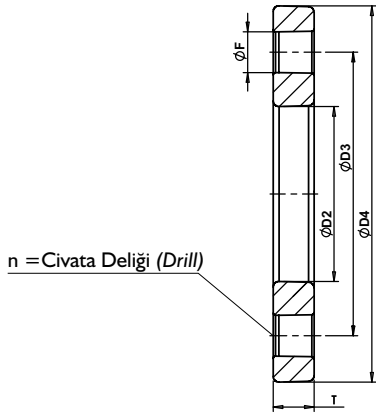
- ✓ Metrik ve BSP yapıştırma soketli
Metric and BSP female solvent socket

U-PVC

METRİK-METRIC TSE / ISO / DIN		IMPERIAL BS / ANSI / ASTM		AUSTRALIA / NEW ZEALAND AS / NZS		PN	DN mm	L	L2	Z	D2	D3	
D mm	KOD CODE	D INCH	D mm	KOD CODE	D mm								KOD CODE
20	FKL-020	1/2"	21.3	AFKL-020	21.3	AFKL-020	16	15	16	19	6	27	34
25	FKL-025	3/4"	26.9	AFKL-025	26.9	AFKL-025	16	20	19	21	7	33	41
32	FKL-032	1"	33.7	AFKL-032	33.7	AFKL-032	16	25	22	25	7	41	50
40	FKL-040	1 1/4"	42.4	AFKL-040	42.4	AFKL-040	16	32	26	29	8	50	61
50	FKL-050	1 1/2"	48.3	AFKL-050	48.3	AFKL-050	16	40	31	34	8	61	73
63	FKL-063	2"	60.3	AFKL-063	60.3	AFKL-063	16	50	38	41	9	76	90
75	FKL-075	2 1/2"	75.3	AFKL-075	75.3	AFKL-075	16	65	44	47	10	90	106
90	FKL-090	3"	88.9	AFKL-090	88.9	AFKL-090	16	80	51	56	11	108	125
110	FKL-110	4"	114.3	AFKL-110	114.3	AFKL-110	16	100	61	66	12	131	150
125	FKL-125	-	-	-	-	-	16	110	69	74	13	148	170
140	FKL-140	5"	140.3	AFKL-140	140.0	FKL-140	16	125	76	81	14	165	188
160	FKL-160	6"	168.3	AFKL-160	160.0	FKL-160	16	150	86	91	16	188	213
200	FKL-200	7"	219.1	AFKL-200	200.0	FKL-200	10	175	106	118	24	224	250
225	FKL-225	8"	219.1	AFKL-225	225.0	FKL-225	10	200	119	125	25	248	270
250	FKL-250	9"	244.5	AFKL-250	250.0	FKL-250	10	225	131	140	27	274	328
280	FKL-280	10"	273.0	AFKL-280	280.0	FKL-280	10	250	147	157	32	307	325
315	FKL-315	12"	323.9	AFKL-315	315.0	FKL-315	10	300	164	181	32	346	378
355	FKL-355	14"	355.6	AFKL-355	355.0	FKL-355	10	350	184	212	35	382	430
400	FKL-400	16"	406.4	AFKL-400	400.0	FKL-400	10	400	206	231	35	433	482

Tüm ürünlerimiz enjeksiyondur.
All our products are manufactured by injection.

PP FLANŞ
PP FLANGE



D		KOD CODE	PN	D2	D3	D4	T	F	n	Ambalaj Package
MM	INC									
20	1/2"	FFL...-020	16	28	65	95	11	14	4	220
25	3/4"	FFL...-025	16	34	75	105	12	14	4	170
32	1"	FFL...-032	16	42	85	115	14	14	4	100
40	1 1/4"	FFL...-040	16	51	100	140	15	18	4	75
50	1 1/2"	FFL...-050	16	62	110	150	15,5	18	4	65
63	2"	FFL...-063	16	78	125	165	18	18	4	45
75	2 1/2"	FFL...-075	16	92	145	185	20	18	4	35
90	3"	FFL...-090	16	110	160	200	22	18	8	55
110	4"	FFL...-110	16	133	180	220	24	18	8	50
125	4 1/2"	FFL...-125	16	150	210	250	26	18	8	30
140	5"	FFL...-140	16	167	210	250	26	18	8	25
160	6"	FFL...-160	16	190	240	285	28	22	8	20
200	7"	FFL...-200	10	225	295	340	36	22	8	10
225	8"	FFL...-225	10	250	295	340	36	22	8	10
250	9"	FFL...-250	10	284	350	395	36	22	12	8
280	10"	FFL...-280	10	307	350	395	36	22	12	1
315	12"	FFL...-315	10	349	400	450	36	22	12	1
355	14"	FFL...-355	10	388	460	505	38	22	16	1
400	16"	FFL...-400	10	442	515	565	42	26	16	1

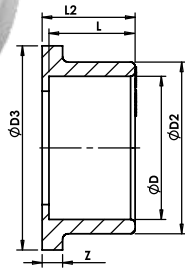
Tüm ürünlerimiz enjeksiyondur.

All our products are manufactured by injection.

- ✓ Renk seçimi için kod (...) noktah yerlere (B-G-M-Y) harflerinden birini koyun.
Put one of these letters (B-G-M-Y) to the spaces with dots (...) for color choice.

PPRC KOLE
PPRC COLE

- ✓ Metrik ve BSP yapıştırma soketli
Metric and BSP female solvent socket

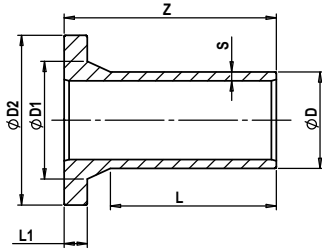


D		KOD CODE	PN	L	L2	Z	D2	D3
MM	INC							
20	1/2"	FKL...-020	16	16	19	6	27	34
25	3/4"	FKL...-025	16	19	21	7	33	41
32	1"	FKL...-032	16	22	25	7	41	50
40	1 1/4"	FKL...-040	16	26	29	8	50	61
50	1 1/2"	FKL...-050	16	31	34	8	61	73
63	2"	FKL...-063	16	38	41	9	76	90
75	2 1/2"	FKL...-075	16	44	47	10	90	106
90	3"	FKL...-090	16	51	56	11	108	125
110	4"	FKL...-110	16	61	66	12	131	150
125	4 1/2"	FKL...-125	16	69	74	13	148	170
140	5"	FKL...-140	16	76	81	14	165	188
160	6"	FKL...-160	16	86	91	16	188	213
200	7"	FKL...-200	10	106	118	24	224	250
225	8"	FKL...-225	10	119	125	25	248	270
250	9"	FKL...-250	10	131	140	27	274	328
280	10"	FKL...-280	10	147	157	32	307	325
315	12"	FKL...-315	10	164	181	32	346	378
355	14"	FKL...-355	10	184	212	35	382	430
400	16"	FKL...-400	10	206	231	35	433	482

Tüm ürünlerimiz enjeksiyondur.

All our products are manufactured by injection.

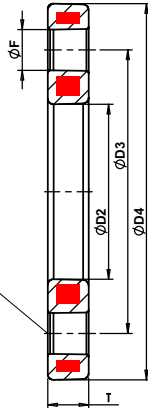
PE FLANŞ ADAPTÖRÜ PE FLANGE ADAPTOR



D		KOD CODE	PN	D1	D2	L	L1	Z	S	Ambalaj Package
MM	INC									
20	1/2"	PEKL-020	16	28	45	41	7	76	3,0	100
25	3/4"	PEKL-025	16	34	58	41	9	81	3,0	50
32	1"	PEKL-032	16	42	68	44	10	85	3,0	40
40	1 1/4"	PEKL-040	16	48	78	49	11	88	3,7	70
50	1 1/2"	PEKL-050	16	58	88	55	12	92	4,6	50
63	2"	PEKL-063	10	78	102	63	14	98	3,8	60
75	2 1/2"	PEKL-075	10	92	122	70	16	107	4,5	60
90	3"	PEKL-090	10	108	138	79	17	116	5,4	45
110	4"	PEKL-110	10	128	158	82	17	128	6,6	24
125	4 1/2"	PEKL-125	10	135	158	87	18	132	7,4	16
140	5"	PEKL-140	10	158	188	92	18	142	8,3	12
160	6"	PEKL-160	10	178	212	98	18	145	9,5	12
200	7"	PEKL-200	10	235	268	112	24	174	11,9	4
225	8"	PEKL-225	10	238	268	120	24	179	13,4	4
250	9"	PEKL-250	10	288	320	129	25	195	14,8	2
280	10"	PEKL-280	10	294	320	139	25	205	16,6	2
315	12"	PEKL-315	10	338	370	150	25	216	18,7	2
355	14"	PEKL-355	10	376	430	164	30	233	21,1	1
400	16"	PEKL-400	10	430	480	179	33	246	23,7	1

Tüm ürünlerimiz enjeksiyondur.
All our products are manufactured by injection.

PP KAPLI ÇELİK FLANŞ PP FLANGE WITH STEEL CORE



n = Civata Deliği (Drill)

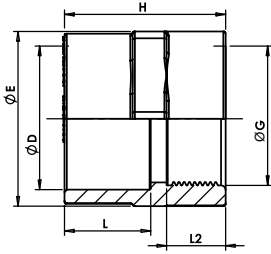
D		KOD CODE	PN	D2	D3	D4	T	F	n	Ambalaj Package
MM	INC									
20	1/2"	PEFL-020	16	28	65	95	12	14	4	85
25	3/4"	PEFL-025	16	34	75	105	12	14	4	68
32	1"	PEFL-032	16	42	85	115	16	14	4	52
40	1 1/4"	PEFL-040	16	51	100	140	16	18	4	20
50	1 1/2"	PEFL-050	16	62	110	150	18	18	4	15
63	2"	PEFL-063	16	78	125	165	18	18	4	15
75	2 1/2"	PEFL-075	16	92	145	188	18	18	4	15
90	3"	PEFL-090	16	108	160	204	20	18	8	10
110	4"	PEFL-110	16	128	180	224	20	18	8	10
125	4 1/2"	PEFL-125	16	135	180	224	20	18	8	10
140	5"	PEFL-140	16	158	210	252	24	18	8	6
160	6"	PEFL-160	16	178	240	285	24	22	8	6
200	7"	PEFL-200	10	188	295	340	24	22	8	4
225	8"	PEFL-225	10	235	295	340	27	22	8	4
250	9"	PEFL-250	10	238	350	395	27	22	12	4
280	10"	PEFL-280	10	288	350	395	30	22	12	4
315	12"	PEFL-315	10	294	400	445	30	22	12	2
355	14"	PEFL-355	10	338	460	514	34	22	16	1
400	16"	PEFL-400	10	376	515	571	40	22	16	1

Tüm ürünlerimiz enjeksiyondur.
All our products are manufactured by injection.

İÇ DİŞLİ ADAPTÖR

INTERIOR THREADED ADAPTERS

- ✓ BSP iç dişli ve metrik yapıştırma soketli
BSP female threaded and metric female solvent socket



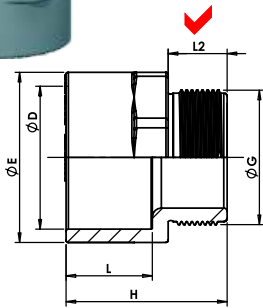
D		KOD CODE	PN	L	L2	H	G	E	AMBALAJ PACKAGE
MM	INC								
20	1/2"	FAD-020	16	16	15	37,5	1/2"	27	750
25	3/4"	FAD-025	16	19	16,3	37,8	3/4"	32	500
32	1"	FAD-032	16	22	19	46	1"	43	200
40	1 1/4"	FAD-040	16	26	21,4	49,9	1 1/4"	50	150
50	1 1/2"	FAD-050	16	31	21,5	59,5	1 1/2"	63	75
63	2"	FAD-063	16	38	26	71	2"	77	40
75	2 1/2"	FAD-075	16	44	30,5	81,5	2 1/2"	94	25
90	3"	FAD-090	16	51	33,5	91,5	3"	108	20
110	4"	FAD-110	16	61	39,3	110,3	4"	125	24
125	4 1/2"	FAD-125	16	69	44	147	4 1/2"	140	18
140	5"	FAD-140	16	76	49	151	5"	160	15
160	6"	FAD-160	16	86	66	179	6"	185	12
200	7"	FAD-200	10	106	70	224	7"	218	8
225	8"	FAD-225	10	119	65	250	8"	244	5
250	9"	FAD-250	10	131	109	340	9"	270	1

Tüm ürünlerimiz enjeksiyondur.
All our products are manufactured by injection.

DIŞ DİŞLİ ADAPTÖR

EXTERIOR THREADED ADAPTERS

- ✓ BSP dış dişli ve metrik yapıştırma soketli
BSP male threaded and metric female solvent socket



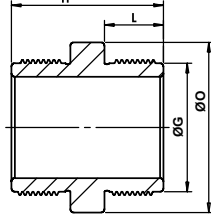
D		KOD CODE	PN	L	L2	H	G	E	AMBALAJ PACKAGE
MM	INC								
20	1/2"	FDD-020	16	16	15	42	1/2"	25	750
25	3/4"	FDD-025	16	19	16,3	46,3	3/4"	32	450
32	1"	FDD-032	16	22	19,1	45,1	1"	40	300
40	1 1/4"	FDD-040	16	26	21,4	62,40	1 1/4"	50	120
50	1 1/2"	FDD-050	16	31	21,5	58,5	1 1/2"	60	100
✓ 50	1 1/2"	FDD-050U	16	31	34	71	1 1/2"	60	200
✓ 63	2"	FDD-063	16	38	26	71	2"	75	50
✓ 63	2"	FDD-063U	16	38	44	89	2"	75	45
✓ 75	2 1/2"	FDD-075	16	44	30,2	83	2 1/2"	90	40
✓ 75	2 1/2"	FDD-075 U	16	44	50,5	103	2 1/2"	90	60
✓ 90	3"	FDD-090	16	51	33,5	94	3"	106	25
✓ 90	3"	FDD-090U	16	51	57	117,5	3"	106	35
✓ 110	4"	FDD-110	16	61	39,5	112	4"	129,5	12
✓ 110	4"	FDD-110U	16	61	70	142,5	4"	129,5	20
125	4 1/2"	FDD-125	16	69	44	-	-	-	1
140	5"	FDD-140	16	76	-	-	-	-	1
160	6"	FDD-160	16	86	-	-	-	-	1
200	7"	FDD-200	10	106	-	-	-	-	1
225	8"	FDD-225	10	119	-	-	-	-	1

Tüm ürünlerimiz enjeksiyondur.
All our products are manufactured by injection.

- ✓ Ekstra Diş Uzunluğu
Extra Long Thread

NİPEL NIPPLE

- ✓ BSP dış dişli
BSP male threaded



D INC	KOD CODE	PN	L	H	G	O	AMBALAJ PACKAGE
1/2"	FNP-020	16	15	42	1/2"	24	900
3/4"	FNP-025	16	16,3	44	3/4"	30	550
1"	FNP-032	16	19,1	50	1"	36	300
1 1/4"	FNP-040	16	21,4	58	1 1/4"	46	180
1 1/2"	FNP-050	16	21,4	58	1 1/2"	50	140
2"	FNP-063	16	25,7	66	2"	65	70
2 1/2"	FNP-075	16	30,2	78	2 1/2"	80	35
3"	FNP-090	16	33,3	85	3"	95	70
4"	FNP-110	16	39,3	96	4"	120	40
4 1/2"	FNP-125	16	-	-	4 1/2"	-	1
5"	FNP-140	16	-	-	5"	-	1
6"	FNP-160	16	-	-	6"	-	1
7"	FNP-200	10	-	-	7"	-	1

Tüm ürünlerimiz enjeksiyondur.
All our products are manufactured by injection.

REDÜKSİYON REDUCTIONS

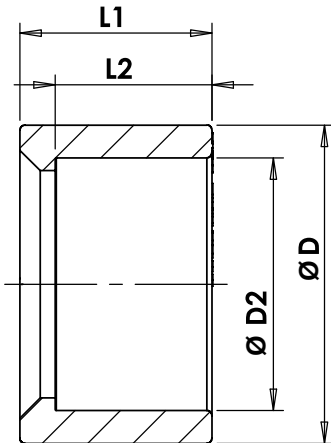
- ✓ Metrik iç ve dış yapıştırma soketli
Metric male and female solvent socket



Model A



Model B



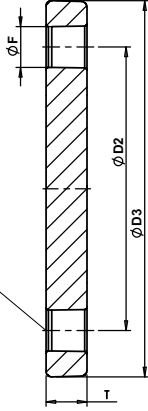
D MM	INC	KOD CODE	PN	L1	L2	D2	MODEL	AMBALAJ PACKAGE
32	1"	32-20	16	22	16	20	A	950
32	1"	32-25	16	22	19	25	A	950
40	1 1/4"	40-25	16	26	19	25	B	500
40	1 1/4"	40-32	16	26	22	32	A	500
50	1 1/2"	50-32	16	31	22	32	B	250
50	1 1/2"	50-40	16	31	26	40	A	250
63	2"	63-32	16	38	22	32	B	130
63	2"	63-40	16	38	26	40	A	130
63	2"	63-50	16	38	31	50	B	130
75	2 1/2"	75-50	16	44	31	50	B	75
75	2 1/2"	75-63	16	44	38	63	A	75
90	3"	90-50	16	51	31	50	B	45
90	3"	90-63	16	51	38	63	B	45
90	3"	90-75	16	51	44	75	A	45
110	4"	110-63	16	61	38	63	B	28
110	4"	110-75	16	61	44	75	B	28
110	4"	110-90	16	61	51	90	A	28
125	4 1/2"	125-90	16	69	51	90	B	45
125	4 1/2"	125-110	16	69	61	110	A	45
140	5"	140-90	16	76	51	90	B	35
140	5"	140-110	16	76	61	110	B	35
140	5"	140-125	16	76	69	125	A	35
160	6"	160-90	16	86	51	90	B	20
160	6"	160-110	16	86	61	110	B	20
160	6"	160-140	16	86	76	140	A	20
200	7"	200-160	16	106	86	160	B	12
225	8"	225-200	16	119	106	200	A	8
250	9"	250-225	16	131	119	225	A	
280	10"	280-250	16	147	131	250	A	
315	12"	315-280	16	164	147	280	A	
355	14"	355-280	16	184	147	280	A	
355	14"	355-315	16	184	164	315	A	
400	16"	400-280	16	206	147	280	A	
400	16"	400-315	16	206	164	315	A	
400	16"	400-355	16	206	184	355	A	

Tüm ürünlerimiz enjeksiyondur.
All our products are manufactured by injection.

KÖR FLANŞ
BLIND FLANGE



n = Civata Deliği (Drill)

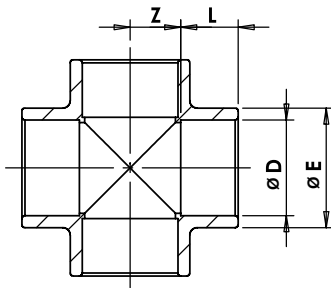


D		KOD CODE	PN	D2	D3	T	F	n	AMBALAJ PACKAGE
MM	INC								
20	1/2"	FKF-020	16	65	95	11	14	4	250
25	3/4"	FKF-025	16	75	105	12	14	4	200
32	1"	FKF-032	16	85	115	14	14	4	120
40	1 1/4"	FKF-040	16	100	140	15	18	4	100
50	1 1/2"	FKF-050	16	110	150	16	18	4	80
63	2"	FKF-063	16	125	165	18	18	4	50
75	2 1/2"	FKF-075	16	145	185	20	18	4	35
90	3"	FKF-090	16	160	200	22	18	8	30
110	4"	FKF-110	16	180	220	24	18	8	20
125	4 1/2"	FKF-125	16	210	250	26	18	8	30
140	5"	FKF-140	16	210	250	26	18	8	25
160	6"	FKF-160	16	240	285	28	22	8	20
200	7"	FKF-200	10	295	340	36	22	8	10
225	8"	FKF-225	10	295	340	36	22	8	10
250	9"	FKF-250	10	350	395	36	22	12	8
280	10"	FKF-280	10	350	395	36	22	12	1
315	12"	FKF-315	10	400	450	36	22	12	1
355	14"	FKF-355	10	460	505	38	22	16	1
400	16"	FKF-400	10	515	565	42	26	16	1

Tüm ürünlerimiz enjeksiyondur.
All our products are manufactured by injection.

KURUVA
CROSS

✓ Metrik yapıştırma soketli
Metric female solvent socket



* Konfeksiyon / Hand made

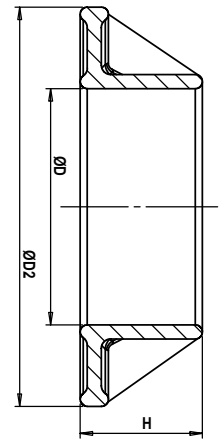
D		KOD CODE	PN	L	Z	E	AMBALAJ PACKAGE
MM	INC						
25	3/4"	FKR-025	16	19	13,5	32	150
32	1"	FKR-032	16	22	17	40	80
40	1 1/4"	FKR-040	16	26	21	50	45
50	1 1/2"	FKR-050	16	31	26	61	60
63	2"	FKR-063	16	38	32,5	75	30
75	2 1/2"	FKR-075	16	44	38,5	89	20
90	3"	FKR-090	16	51	46	107	12
110	4"	FKR-110	16	61	56	129	7
140	5"	FKR-140	16	76	71	-	4
160	6"	FKR-160	16	86	86	-	3
* 200	7"	FKR-200	10	106	106	-	3
* 225	8"	FKR-225	10	118	114	-	3
* 250	9"	FKR-250	10	131	132	-	1
* 280	10"	FKR-280	10	146	152	-	1
* 315	12"	FKR-315	10	163	168	-	1
* 355	14"	FKR-355	10	193	196	-	1
* 400	16"	FKR-400	10	216	214	-	1

U-PVC BETON GEÇİŞ FLANŞI *U-PVC WALL CROSS FLANGES*

D		KOD CODE	PN	D2	H
MM	INC				
50	1 ½"	FBG-050	16	85	26
63	2"	FBG-063	16	100	31,5
75	2 ½"	FBG-075	16	115	37
90	3"	FBG-090	16	133	42
110	4"	FBG-110	16	160	50,5
125	4 ½"	FBG-125	16	180	56,5
140	5"	FBG-140	16	200	62,5
160	6"	FBG-160	16	225	71
200	7"	FBG-200	10	272	87
225	8"	FBG-225	10	303	97
250	9"	FBG-250	10	334	107
280	10"	FBG-280	10	400	107
315	12"	FBG-315	10	400	107
355	14"	FBG-355	10	485	107
400	16"	FBG-400	10	485	107

Tüm ürünlerimiz enjeksiyondur.
All our products are manufactured by injection.

**YENİ ÜRÜN..!
NEW PRODUCT..!**

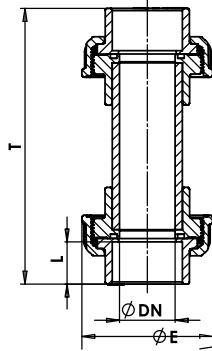


- ✓ Metrik yapıştırma soketli, uzun yapıştırma boyu
Metric female solvent socket, extra long bonding length
- ✓ Yüksek kalite plastik enjeksiyon
High quality plastic injection
- ✓ Dönmeyi engelleyen, sağlamlık kazandıran destekler
Special supports that prevent rotation and give stability
- ✓ Sızdırmazlık sağlayan özel pürüzlü yüzey
Special rough surface for leakproofing
- ✓ Ortam koşullarına ve mekanik etkilere üstün dayanım
Excellent mechanical and environmental strength

U-PVC GÖZETLEME CAMLARI
U-PVC SIGHT GLASSES

- ✓ Civataların görüş alanını bölüp daraltmadığı uzun ve geniş görüş alanı
The wide and extended eyesight which is not constricted by bolts
- ✓ Yüksek kalite plastikten 20 mm'den 315 mm'ye tüm çaplarda
Made of high quality plastic and in all diameters from 20 mm to 315 mm
- ✓ Kendinden rakorlu özel tasarım
Special design with unions built in
- ✓ Net görünüm sağlayan tam saydam sararmaz pleksiglas malzeme
Completely transparent and plexiglass material that enables a clear vision
- ✓ Sağlam, dayanıklı ve kaliteli
Durable, heavy-duty and high quality
- ✓ Montajlı tesisattan kolaylıkla sökülüp takılma imkanı
It can be mounted and demounted easily from an assembled installation

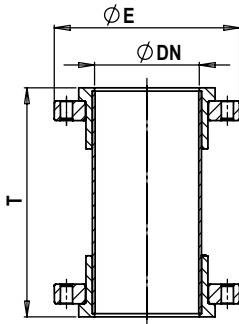
Model A. Rakorlu
Model A. with Unions



D		KOD CODE	PN	DN	L	T	E
MM	INC						
20	1/2"	FGK-020	10	15	16	139	54
25	3/4"	FGK-025	10	20	19	145	60
32	1"	FGK-032	10	25	22	157	68
40	1 1/4"	FGK-040	10	32	26	183	83
50	1 1/2"	FGK-050	10	40	31	203	97
63	2"	FGK-063	10	50	38	228	118
75	2 1/2"	FGK-075	10	65	44	252	143
90	3"	FGK-090	10	80	51	282	178
110	4"	FGK-110	10	100	61	335	203

Tüm ürünlerimiz enjeksiyondur.
All our products are manufactured by injection.

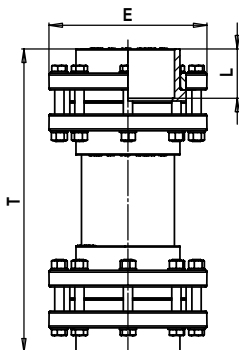
Model B. Çıplak
Model B. Naked



D		KOD CODE	PN	DN	T	E
MM	INC					
125	4 1/2"	FGC-125	10	110	295	250
140	5"	FGC-140	10	125	295	250
160	6"	FGC-160	10	150	340	285
200	7"	FGC-200	10	175	354	340
225	8"	FGC-225	10	200	354	340
250	9"	FGC-250	10	225	418	395
280	10"	FGC-280	10	225	418	395
315	12"	FGC-315	10	300	534	465

Tüm ürünlerimiz enjeksiyondur.
All our products are manufactured by injection.

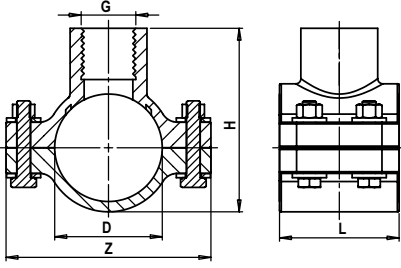
Model B. Komple
Model B. Complete



D		KOD CODE	PN	DN	L	T	E
MM	INC						
125	4 1/2"	FGK-125	10	110	69	443	250
140	5"	FGK-140	10	125	76	457	250
160	6"	FGK-160	10	150	86	522	285
200	7"	FGK-200	10	175	106	590	340
225	8"	FGK-225	10	200	119	604	340
250	9"	FGK-250	10	225	131	698	395
280	10"	FGK-280	10	225	131	732	395
315	12"	FGK-315	10	300	164	896	465

Tüm ürünlerimiz enjeksiyondur.
All our products are manufactured by injection.

PRIZ KOLYE SOCKET COLLAR



D		G	KOD CODE	PN	Z	H	L
MM	INC						
32	1"	1/4"	FPK-032	10	-	-	-
32	1"	3/4"	FPK-033	10	-	-	-
40	1 1/4"	1/2"	FPK-040	10	-	-	-
40	1 1/4"	3/4"	FPK-041	10	-	-	-
40	1 1/4"	1"	FPK-042	10	-	-	-
50	1 1/2"	1/2"	FPK-050	10	-	-	-
50	1 1/2"	3/4"	FPK-051	10	-	-	-
50	1 1/2"	1"	FPK-052	10	-	-	-
63	2"	1/2"	FPK-063	10	121	105	82
63	2"	3/4"	FPK-064	10	121	105	82
63	2"	1"	FPK-065	10	121	105	82
75	2 1/2"	1/2"	FPK-075	10	133	120	88
75	2 1/2"	3/4"	FPK-076	10	133	120	88
75	2 1/2"	1"	FPK-077	10	133	120	88
90	3"	1/2"	FPK-090	10	147	142	88
90	3"	3/4"	FPK-091	10	147	142	88
90	3"	1"	FPK-092	10	147	142	88
110	4"	1/2"	FPK-110	10	168	162	105
110	4"	3/4"	FPK-111	10	168	162	105
110	4"	1"	FPK-112	10	168	162	105

Tüm ürünlerimiz enjeksiyondur.
All our products are manufactured by injection.

U-PVC KELEPÇELER U-PVC PIPE CLIPS



MALZEME CİNSİ DESCRIPTION	KOD NO CODE NO	AMBALAJ PACKAGE
20 mm. Kelepçe - Clip	FBK-020	500
25 mm. Kelepçe - Clip	FBK-025	400
32 mm. Kelepçe - Clip	FBK-032	300
40 mm. Kelepçe - Clip	FBK-040	200
50 mm. Kelepçe - Clip	FBK-050	100
63 mm. Kelepçe - Clip	FBK-063	200
75 mm. Kelepçe - Clip	FBK-075	100
90 mm. Kelepçe - Clip	FBK-090	100
110 mm. Kelepçe - Clip	FBK-110	100
125 mm. Kelepçe - Clip	FBK-125	100
160 mm. Kelepçe - Clip	FBK-160	50
200 mm. Kelepçe - Clip	FBK-200	30

Tüm ürünlerimiz enjeksiyondur.
All our products are manufactured by injection.

AVRUPADAN İTHAL U-PVC YAPIŞTIRICILAR
IMPORTED FROM EUROPE U-PVC ADHESIVE



MALZEME CİNSİ DESCRIPTION	KOD CODE
U-PVC Yapıştırıcı (Pegafor-1 kg.) U-PVC Adhesive (Pegafor-1 kg.)	YAP-105
U-PVC Yapıştırıcı fırçalı (Pegafor-1/2 kg.) U-PVC Adhesive with brush (Pegafor-1/2 kg.)	YAP-106
U-PVC Yapıştırıcı fırçalı (Pegafor-1/4 kg.) U-PVC Adhesive with brush (Pegafor-1/4 kg.)	YAP-110
U-PVC Yapıştırıcı (Pegafor-1/8 kg.) U-PVC Adhesive (Pegafor-1/8 kg.)	YAP-111

Basıncılı sistemler için U-PVC yapıştırıcı.
Solvent cement for U-PVC pressure systems.
Kıvamlı yapısı ile boşluğu komple doldurur, akıntı yapmaz.
Its high resin content gives it a high gap-filling capacity.
CE işaretiyle, Avrupa Birliği direktiflerine uygundur.
CE marking, the marking certifies that a product has met European Directives.



MALZEME CİNSİ DESCRIPTION	KOD CODE
U-PVC Yapıştırıcı (Tangit- 1 kg.) U-PVC Adhesive (Tangit-1 kg.)	YAP-101

KAYNAK ÇUBUĞU
WELDING ROD



MALZEME CİNSİ DESCRIPTION	KOD CODE
U-PVC Kaynak Çubuğu (Ø3-10 mm) /kg U-PVC Welding Rod (Ø3-10 mm) /kg	YAP-108

U-PVC BORULAR *U-PVC PIPES*

DIŞ ÇAP EXTERIOR DIAMETER	İNÇ INCHES	U-PVC BORULAR U-PVC PIPES			
		PN 6	PN 10	PN 16	ZONDER
20	1/2"	-	-	PN16-020	ZON-020
25	3/4"	-	PN10-025	PN16-025	ZON-025
32	1"	-	PN10-032	PN16-032	ZON-032
40	1 1/4"	PN06-040	PN10-040	PN16-040	ZON-040
50	1 1/2"	PN06-050	PN10-050	PN16-050	ZON-050
63	2"	PN06-063	PN10-063	PN16-063	ZON-063
75	2 1/2"	PN06-075	PN10-075	PN16-075	ZON-075
90	3"	PN06-090	PN10-090	PN16-090	ZON-090
110	4"	PN06-110	PN10-110	PN16-110	ZON-110
125	4 1/2"	PN06-125	PN10-125	PN16-125	ZON-125
140	5"	PN06-140	PN10-140	PN16-140	ZON-140
160	6"	PN06-160	PN10-160	PN16-160	ZON-160
200	7"	PN06-200	PN10-200	PN16-200	ZON-200
225	8"	PN06-225	PN10-225	PN16-225	ZON-225
250	9"	PN06-250	PN10-250	PN16-250	ZON-250
280	10"	PN06-280	PN10-280	PN16-280	-
315	12"	PN06-315	PN10-315	PN16-315	-
355	14"	PN06-355	PN10-355	PN16-355	-
400	16"	PN06-400	PN10-400	PN16-400	-



Lütfen fiyat sorunuz. / Please consult us.